

BESTUNG CARBIDE INC.

BLUE TUNGSTEN OXIDE (BTO)

Grade Available BTO-I

Appearance: Dark Blue Powder

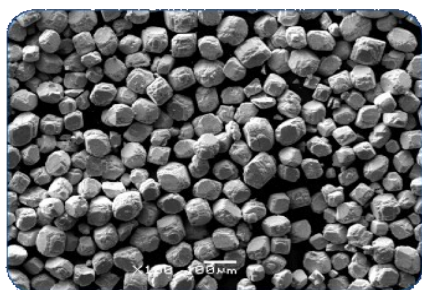
Chemical Composition:

Main component content:

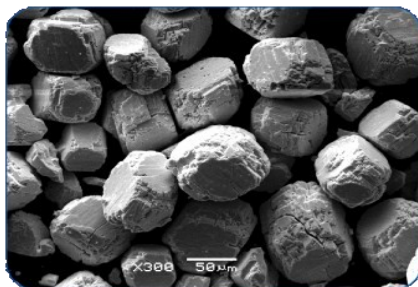
WO₃-x 99.97 % min (by difference)

Trace Element (% max.)

X100



X300



Al	0.0005
As	0.001
Bi	0.0001
Ca	0.001
Co	0.001
Cr	0.001
Cu	0.0003
Fe	0.001
K	0.001
Mg	0.0007
Mn	0.001
Mo	0.002
Na	0.001
Ni	0.0007
P	0.0007
Pb	0.0001
S	0.0007
Sb	0.0008
Si	0.001
Sn	0.0001
Ti	0.001
V	0.001

Packing: Materials in plastic bag within steel drum, net each 200 kgs

Quality: Assay results is available for each lot

76 Industrial Drive, North Tonawanda, NY 14120, USA

Tel: 716-743-2466, Fax: 716-743-2468

Email: sales@bestungcarbideinc.com

